



100-06-003-004  
Lewisville 40  
40 acres

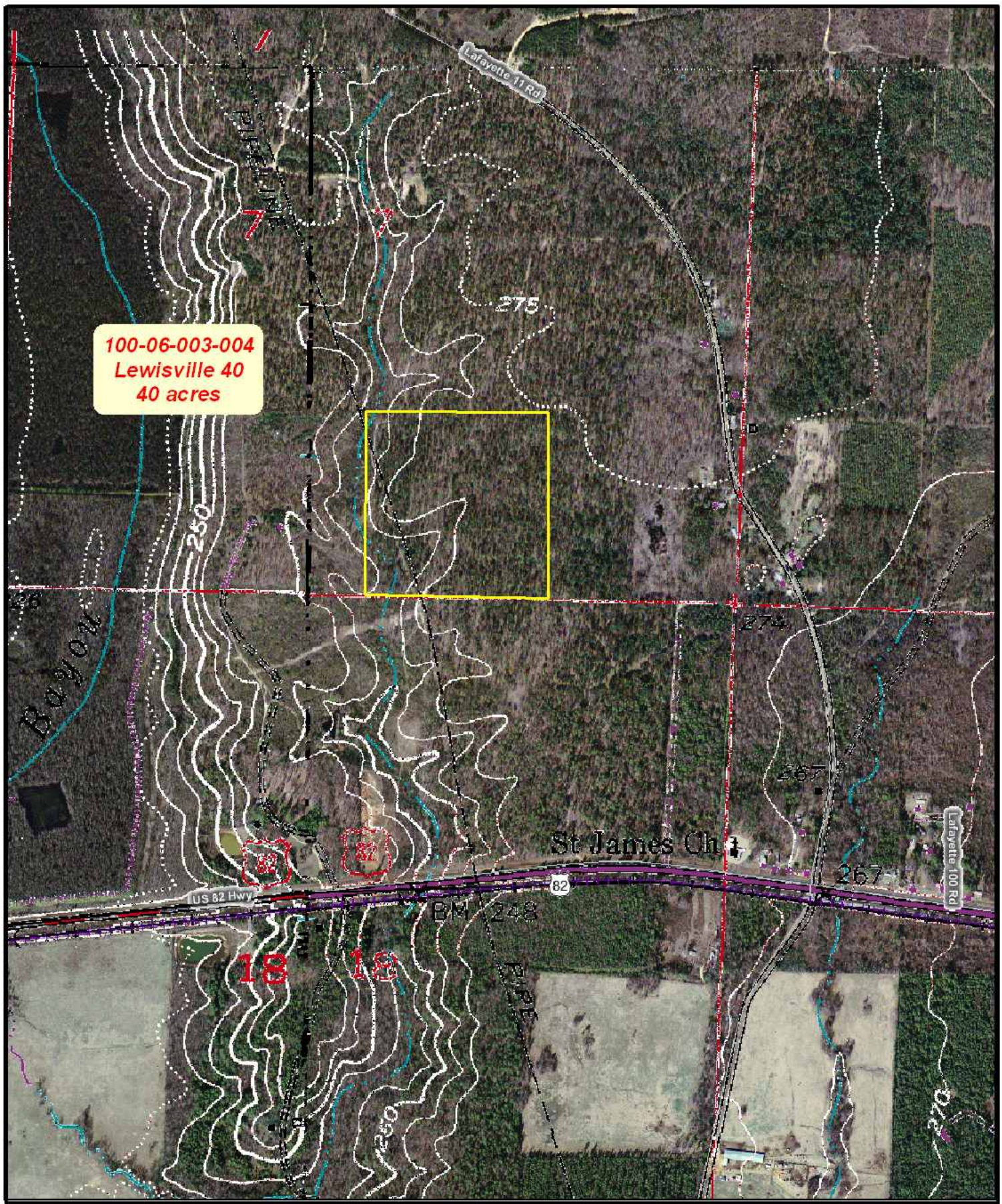
0 0.05 0.1 0.2  
Miles

Sec 7, T16S, R24W  
Lafayette County, Arkansas  
Flight Date 3-1-2006  
Map Date 10-16-2008

-  Tract Boundary
-  County Boundary
-  RFC sign
-  Road

100-06-003-004  
Lewisville 40

Reynolds Forestry Consulting  
P.O. Box 1129  
RFC Magnolia, AR 71754  
(870) 234-0200  
[www.reynoldsforestry.com](http://www.reynoldsforestry.com)



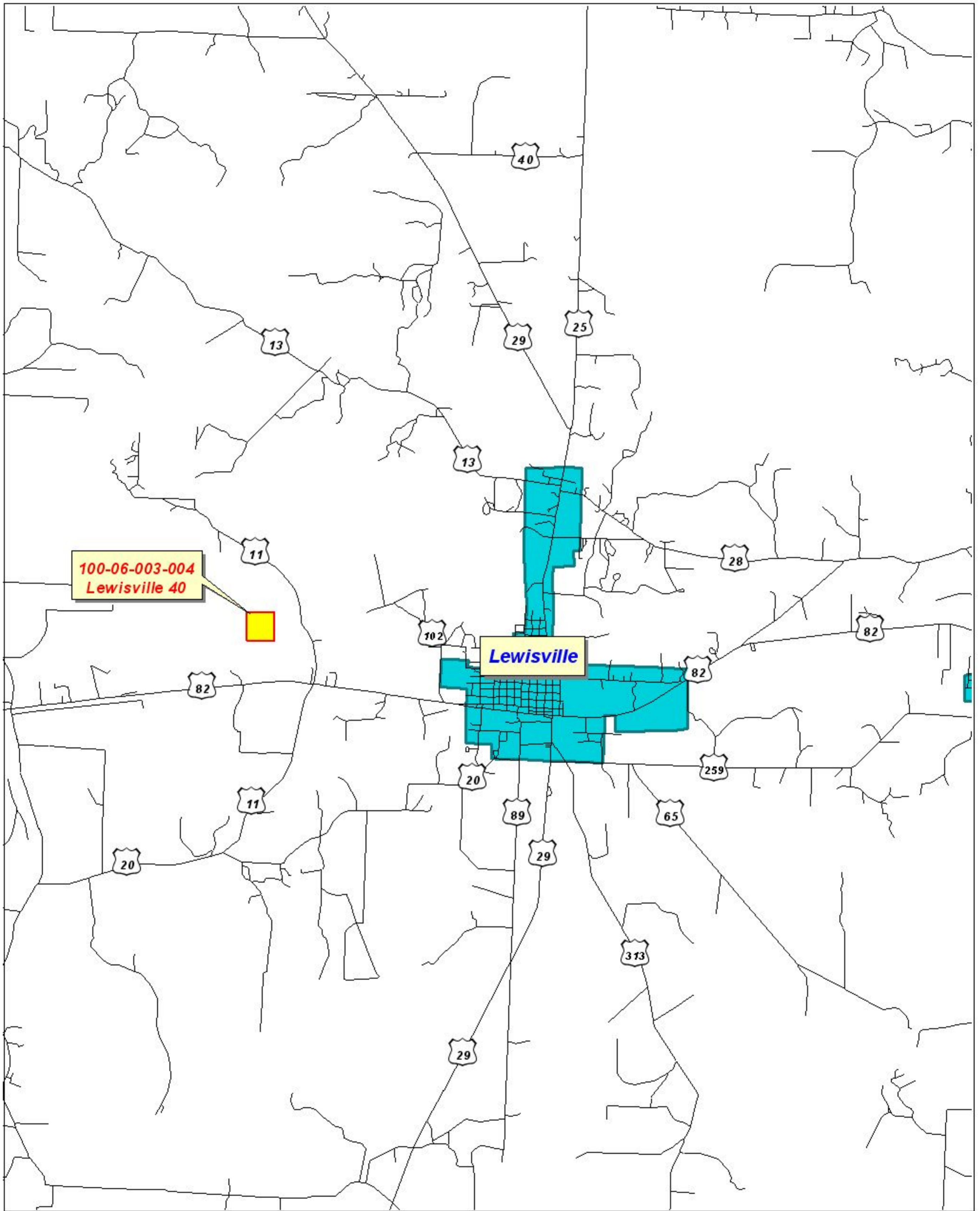
**100-06-003-004**  
**Lewisville 40**  
**40 acres**

Sec 7, T16S, R24W  
 Lafayette County, Arkansas  
 Flight Date 3-1-2006  
 Map Date 10-16-2008

-  Tract Boundary
-  County Boundary
-  RFC sign
-  Road

*100-06-003-004*  
*Lewisville 40*

*Reynolds Forestry Consulting*  
 P.O. Box 1129  
 RFC Magnolia, AR 71754  
 (870) 234-0200  
[www.reynoldsforestry.com](http://www.reynoldsforestry.com)



0 1 Miles

Sec 7, T16S, R24W  
 Lafayette County, Arkansas  
 Flight Date 3-1-2006  
 Map Date 10-16-2008

-  Tract Boundary
-  County Boundary
-  RFC sign
-  Road

100-06-003-004  
 Lewisville 40

Reynolds Forestry Consulting  
 P.O. Box 1129  
 Magnolia, AR 71754  
 (870) 234-0200  
[www.reynoldsforestry.com](http://www.reynoldsforestry.com)